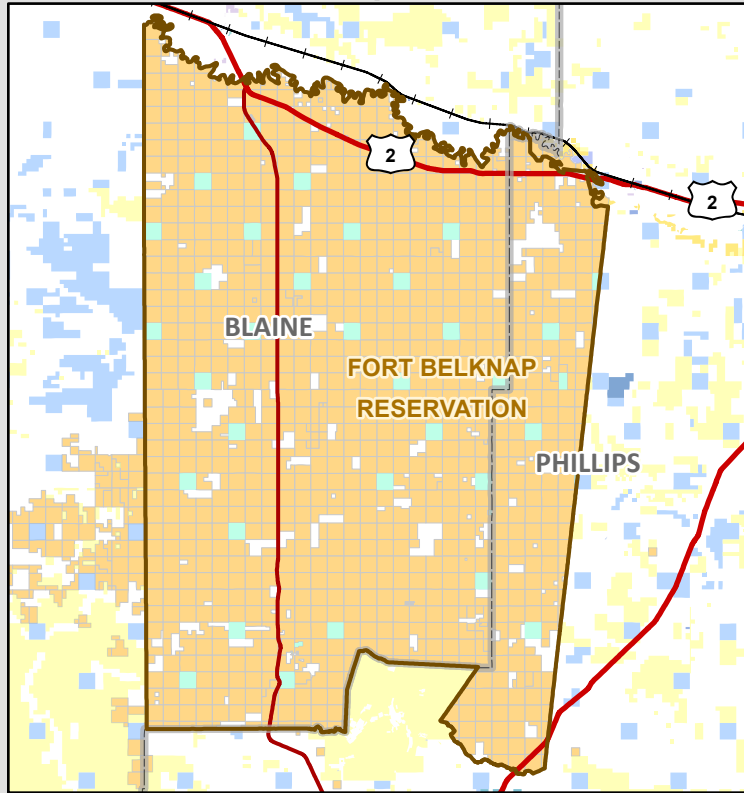
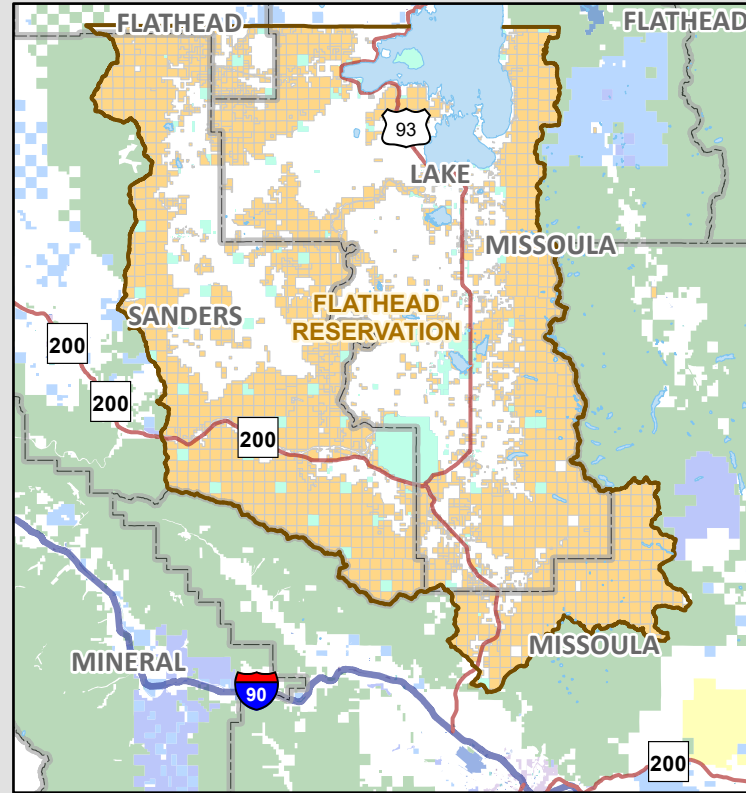


Analyzing Tribal Lands & Private Property

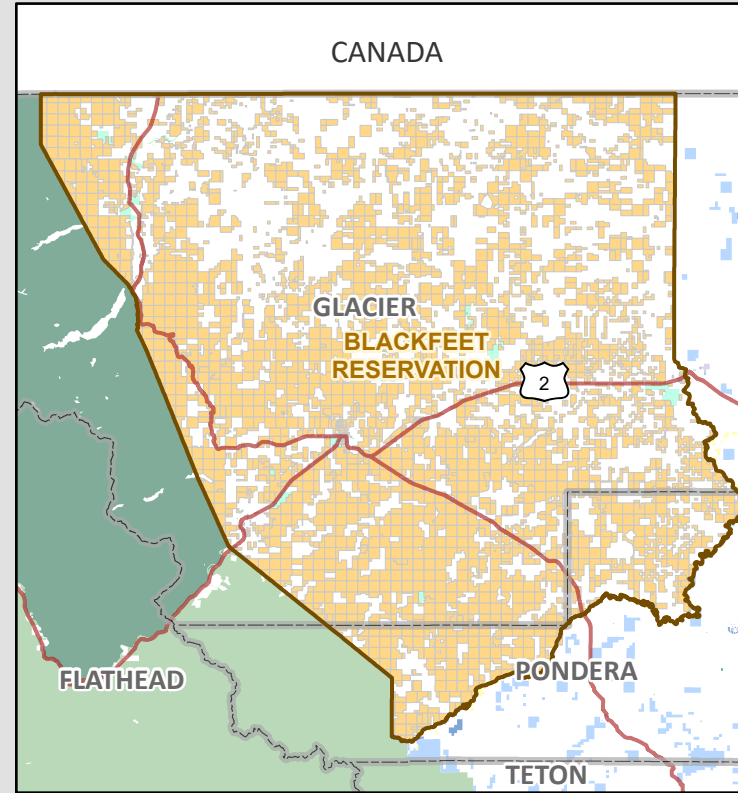
Fort Belknap Reservation



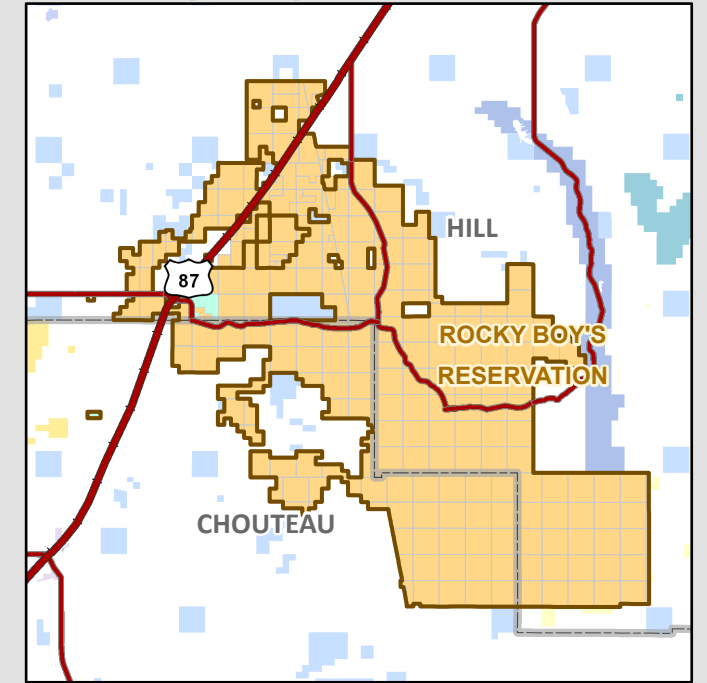
Flathead Reservation



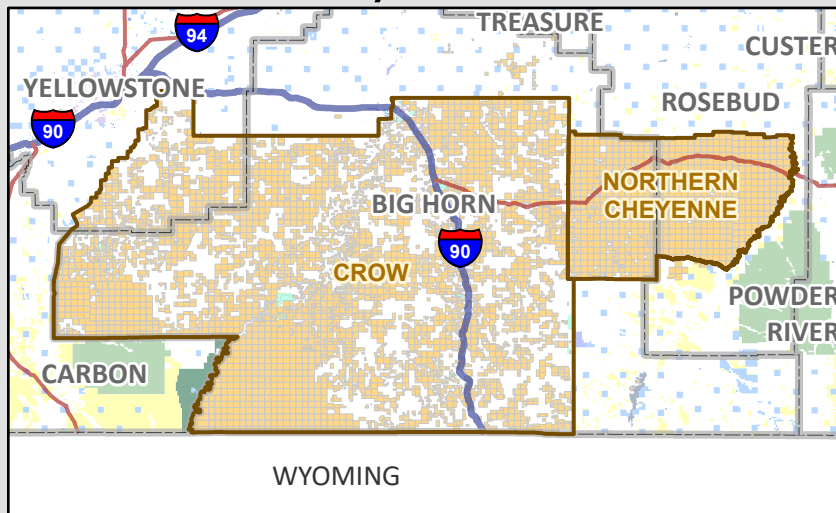
Blackfeet Reservation



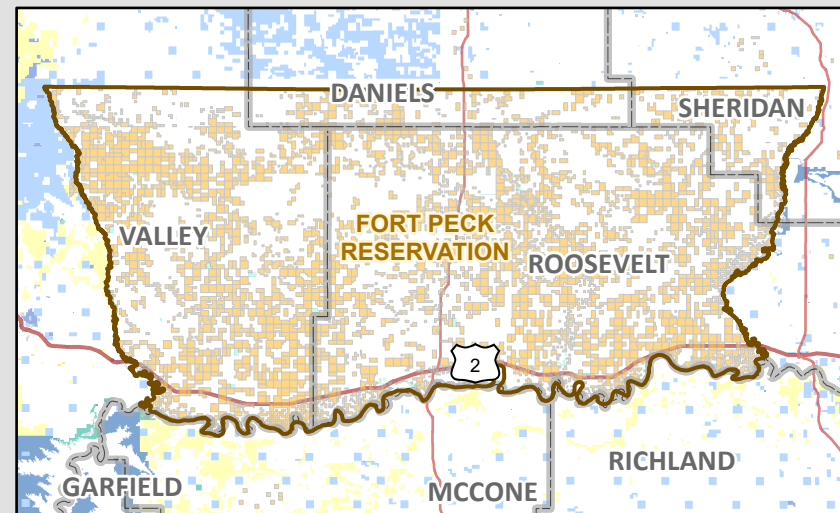
Rocky Boy's Reservation



Crow & N. Cheyenne Reservations



Fort Peck Reservation



Reservation Bdry
 Tribal Lands
 Public Lands
 Private Property

Reservation	Tribal Lands		Private	
	Land mass (acres)	% of total	Land mass (acres)	% of total
Blackfeet	870,345	56.7%	656,400	41.4%
Crow	1,437,050	62.4%	859,350	37.0%
Flathead	749,170	56.9%	506,775	25.6%
Fort Belknap	561,800	90.5%	38,050	5.4%
Fort Peck	811,730	38.5%	1,290,035	61.2%
N. Cheyenne	445,015	97.1%	12,780	2.9%
Rocky Boy's	111,345	99.4%	75	0.1%

*Public lands and water bodies are also part of the analysis (as the percentages won't add up to 100)

**The percentage of the total are of the total reservation land mass

Data source: Montana State Library State Basemap Service

Disclaimer: The Montana State Library State Basemap is not 100% accurate and the data shall only be used for reference purposes only and not to be used within a litigation matter.